

MUSWAY

MUSIC IS THE WAY



GLOBAL AUDIO
MARKETING



TECHNOLOGY FOR SOUND ENTHUSIASTS



Brand Philosophy

At MUSWAY, those who are looking for great-sounding products will find what they are looking for. MUSWAY stands for "Music is the Way" and is meant to symbolize that the company founders understand music as part of their lifestyle and culture, which ultimately led to the motto of the company.

Uncompromisingly good sound can always be seen as an ideal and it is therefore not surprising that all MUSWAY employees are passionate about music, united by the goal of creating high-quality products for demanding music reproduction in an almost simple and likeable way.

DSP Control Via PC/APP

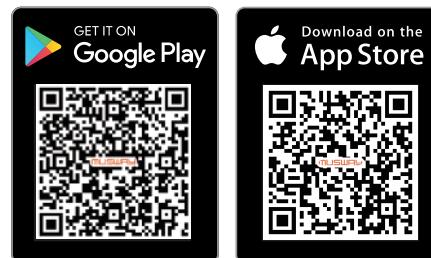


MUSWAY TUNEST

The brand new MUSWAY App "Tunest" is compatible with all newest generation DSP products as soon as a BT/A2 USB Bluetooth dongle is connected. It can be operated with all smartphones and tablets with iOS or Android operating systems via Bluetooth and controls integrated DSP in real time.

"Tunest" is even clearer and more intuitive to use than the previous App and now offers automatic detection of the connected hardware, a group runtime correction, filters from 6dB to 48dB slope rates, group selectable in 6db increments and the ability to adjust the sensitivity of the automatic switch-on function. In addition, it is now possible to receive and send MUSWAY presets via WhatsApp.

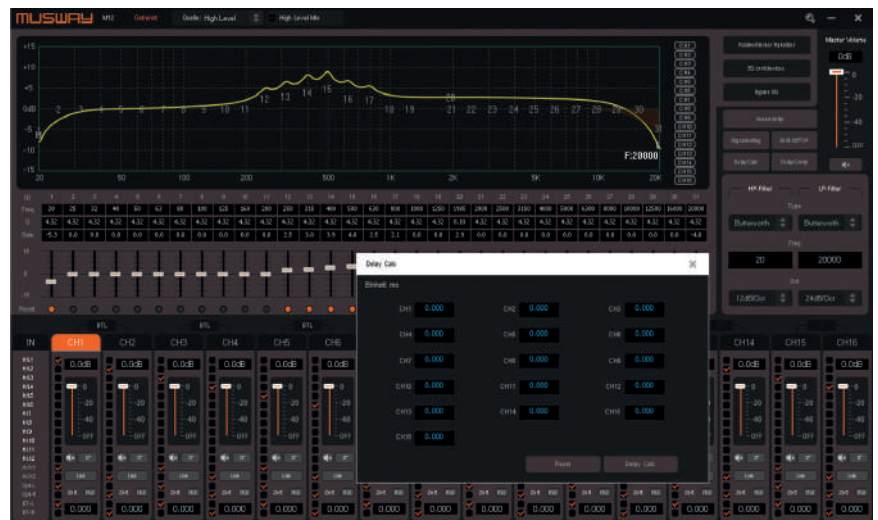
The App can be downloaded free of charge from the [Google Play Store](#) and the [iOS App Store](#).



MUSWAY V3

Also is the MUSWAY "V3" software for PC (newer than Windows XP) and compatible with all DSP products of the newest generation of the connected hardware, a group delay correction, filters down to a 6 dB slope and the option to adjust the sensitivity of the auto turn-on function.

The software can be downloaded free of charge from www.muswayusa.com



WHAT'S NEW IN 2025

myCON
Musway Controller



A Smart Mini-Computer for Musway Amplifiers More Than Just a Controller

Seamless Compatibility with myCON

- ALL DSP Amplifiers from v3
- Mini Series (New Product Launch in 2025)

Elegant & Straight Design



High-Definition
AMOLED Touchscreen



Premium Aluminum
Housing

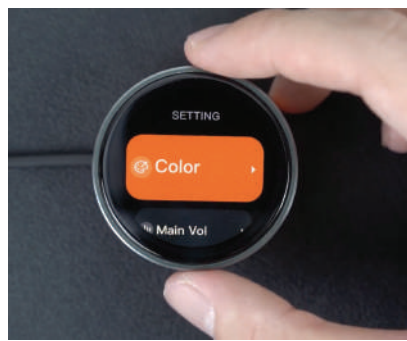


Custom Backlight
Colors

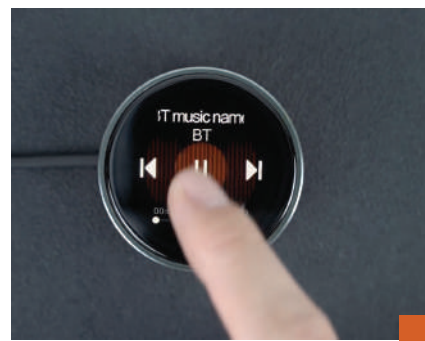
Intuitive Control Options



Rotate



Press



Touch

Basic Features same as DRC1



Adjust Master
Volume



Adjust Subwoofer
Volume



Switch Presets

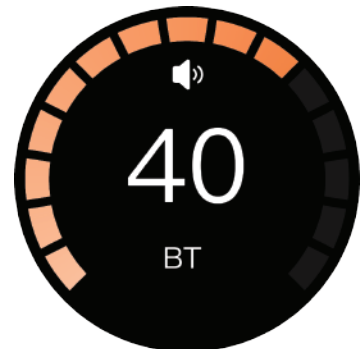
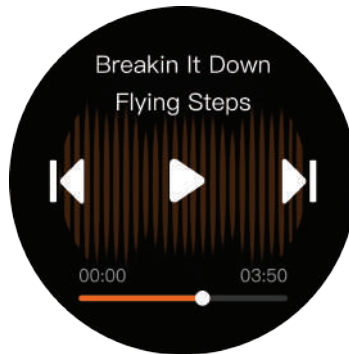


Select Input
Source



Enhanced Feature Audio Streaming with BTA-HD

- Displays track names
- Controls playback
- Adjusts Bluetooth volume



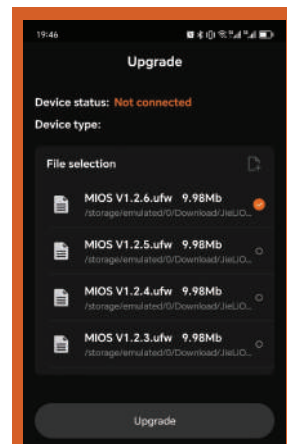
Beyond Basic Controls **Future Features**

Displays amplifier protection states (e.g., overheat, overvoltage, undervoltage)

Easy Firmware **Upgrades**



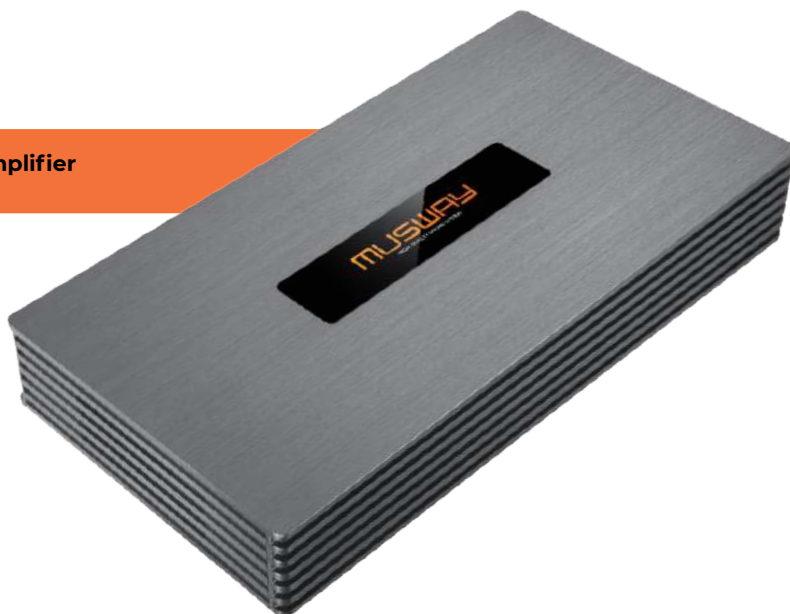
Firmware Updates via Musway OTA APP



Unlock exciting new features for future needs

M12

12 Channel Full Range Class D Amplifier
with 16 Channel DSP



New

M10

10 Channel Full Range Class D Amplifier
with 14 Channel DSP



DSP Amplifiers



EPS technology which prevent when connected an OEM factory radio that no functions are impaired or error messages are written into the vehicle memory.



4-fold laminated board effectively suppresses EMC interference due to the favorable topology

Optional Accessories:



DRCI



BTS



BTSHD



BTA2



Technical Specifications		M12	M10
Power Output (RMS) @13.8 VDC	@4 Ω	85W	CH 1-8: 80 W CH 9-10: 120 W
	@2 Ω	120W	CH 1-8: 135 W CH 9-10: 220 W
	Bridged @ 4 Ω	240W	CH 1-8: 270 W CH 9-10: 440 W
Input	High level	12	10
	Low level	6	6
	AUX	2	2
	Optical (96kHz/ 24 bit)	1	1
DSP Channels		16CH	14CH
Audio Processor		Analog Devices ADAU1466	Anlog Devices ADAU 1466
Signal Converters		A/D: BurrBrown D/A: BurrBrown	A/D: BurrBrown D/A: BurrBrown
Input sensitivity	High-Level	CH1-8:8-24 V/RMS CH9-12:8- 24 V/RMS	CH1-8:8-24 V/RMS CH9-10:8-32 V /RMS
	Low-Level	2-6V/RMS	2-6 V/RMS
	AUX	2-8 V/RMS	1-8 V/RMS
S/N Ratio A weighted @ 1W		≥95dB	≥95dB
Frequency Response -3dB		15Hz-22 kHz	15 Hz - 22 kHz
THD 90% Rated Power 1 kHz, 4 Ω		≥0.05%	≥0.05%
Dimensions Width		13.38 inch	11 inch
Dimensions Depth		6.75 inch	6.5 inch
Dimensions Height		1.88 inch	1.79 inch

DSP Amplifiers

D8

8-Channel Full Range Class D Amplifier with 10-Channel Digital Sound Processor



M6

6-CHANNEL CLASS D AMPLIFIER WITH 8-CHANNEL DSP-630 WATTS RMS



DSP Amplifiers



EPS technology which prevent when connected an OEM factory radio that no functions are impaired or error messages are written into the vehicle memory.



4-fold laminated board effectively suppresses EMC interference due to the favorable topology

Optional Accessories:



DRC1



BTS



BTSHD



BTA2



Technical Specifications		D8	M6
Power Output (RMS) @13.8 VDC	@4 Ω	8x70W	6x70W
	@2 Ω	8x100W	6x105W
	Bridged @ 4 Ω	4x200W	3x210W
Input	High level	6	6
	Low level	AUX Only	6 (* By changing the jumper position on PCB)
	AUX	2	2
	Optical (96kHz / 24 bit)	1	1
DSP Channels		10CH	8CH
Audio Processor		Analog Devices ADAU1452	Analog Devices ADAU1701
Signal Converters		A/D: BurrBrown D/A: BurrBrown	A/D: BurrBrown D/A: BurrBrown
Input sensitivity	High-Level	3.5 to 10 or 18 V/RMS	8 - 24 V/RMS
	Low-Level	(NA)	1.5 - 4.5 V/RMS
	AUX	1.5 to 4.5 V/RMS	1.5 - 4.5 V/RMS
S/N Ratio A weighted @ 1W		≥95db A	≥95db A
Frequency Response -3dB		15 Hz - 22 kHz	15 Hz - 22 kHz
THD 90% Rated Power 1 kHz, 4 Ω		≤0.01%	0.05%
Dimensions Width		8.07 inch	8.66 inch
Dimensions Depth		5 inch	5.9 inch
Dimensions Height		1.48 inch	1.73 inch

DSP Amplifiers

M6 PRO

New

6-CHANNEL CLASS D AMPLIFIER WITH
10-CHANNEL DSP - 1200 WATTS RMS



New

M5

5-CHANNEL CLASS D AMPLIFIER WITH
9-CHANNEL DSP - 500 WATTS RMS



DSP Amplifiers



EPS technology which prevent when connected an OEM factory radio that no functions are impaired or error messages are written into the vehicle memory.



4-fold laminated board effectively suppresses EMC interference due to the favorable topology

Optional Accessories:



DRC1



BTS



BTSHD



BTA2



Technical Specifications		M6 PRO	M5
Power Output (RMS) @13.8 VDC	@4 Ω	6x120W	4x45W + 1x180W
	@2 Ω	6x200W	4x50W (3Ω) + 1x300W (2Ω)
	Bridged @ 4 Ω	3x400W	Not Bridgeable
Input	High level	6	5
	Low level	6 <small>(* By changing the jumper position on PCB)</small>	5 <small>(* By changing the jumper position on PCB)</small>
	AUX	2	2
	Optical (96kHz / 24 bit)	1	1
DSP Channels		10CH	9CH
Audio Processor		Analog Devices ADAU1452	Analog Devices ADAU1701
Signal Converters		A/D: BurrBrown D/A: BurrBrown	A/D: BurrBrown D/A: BurrBrown
Input sensitivity	High-Level	7 - 29 V/RMS	6 - 18 V/RMS
	Low-Level	1 - 8 V/RMS	2-6 V/RMS
	AUX	1 - 8 V/RMS	2-6 V/RMS
S/N Ratio A weighted @ 1W		≥100db	≥95db
Frequency Response -3dB		15 Hz - 22 kHz	10 Hz - 20 kHz
THD 90% Rated Power 1 kHz, 4 Ω		≤0.01%	≤0.015%
Dimensions Width		9.21 inch	5.90 inch
Dimensions Depth		6.29 inch	4.13 inch
Dimensions Height		1.9 inch	1.7 inch

DSP Amplifiers

M4+

4-CHANNEL CLASS D AMPLIFIER WITH
8-CHANNEL DSP .. 540 WATTS RMS



D1S

4-Channel Class AB Amplifier with
6-Channel Digital Sound Processor



DSP Amplifiers



EPS technology which prevent when connected an OEM factory radio that no functions are impaired or error messages are written into the vehicle memory.



4-fold laminated board effectively suppresses EMC interference due to the favorable topology

Optional Accessories:



Technical Specifications		M4+	D1S
Power Output (RMS) @13.8 VDC	@4 Ω	4x100W	25 W x 4
	@2 Ω	4x135W	NA
	Bridged @ 4 Ω	2x270W	Not Bridgeable
Input	High level	4	4
	Low level	5 (* By changing the jumper position on PCB)	AUX Only
	AUX	2	2
	Optical (96kHz / 24 bit)	1	NA
DSP Channels		8CH	6
Audio Processor		Analog Devices ADAU1701	28 bit
Signal Converters		A/D: BurrBrown D/A: BurrBrown	A/D: BurrBrown D/A: BurrBrown
Input sensitivity	High-Level	8 - 24 V/RMS	2V RMS
	Low-Level	1.5 - 4.5 V/RMS	2V RMS
	AUX	1.5 - 4.5 V/RMS	2V RMS
S/N Ratio A weighted @ 1W		≥95db A	95dB
Frequency Response -3dB		15 Hz - 22 kHz	15Hz-22KHz
THD 90% Rated Power 1 kHz, 4 Ω		< 0.05 %	< 0.02%
Dimensions Width		8.66 inch	6.49 inch
Dimensions Depth		5.9 inch	3.85 inch
Dimensions Height		1.73 inch	1.29 inch

TUNE 12

12-Channel Advanced Digital Sound Processor

The TUNE12 inspires with excellent features and quality components that make up the foundation of this very complex device.

Crafted with the discerning audiophile in mind, The TUNE12 is the Musway Crown Jewel of DSPs.



DSP68

8-CHANNEL DSP WITH PC/ APP CONTROL

PREISTIPP
Soundprozessor
CAR & HiFi 2/2021

CAR & HiFi

Ausgabe 2/2021

„Super Ausstattung zum Knallerpreis.“



Processors

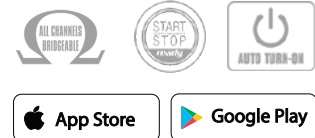


EPS technology which prevent when connected an OEM factory radio that no functions are impaired or error messages are written into the vehicle memory.



4-fold laminated board effectively suppresses EMC interference due to the favorable topology

Optional Accessories:



Technical Specifications		TUNE12	DSP68
Input	High level	8	6
	Low level	6	6
	AUX	2	2
	Optical (96kHz / 24 bit)	1	1
	Coaxial (96kHz / 24 bit)	1	NA
DSP Channels		12CH	8CH
Audio Processor		Analog Devices ADAU1452	Analog Devices ADAU1452
Signal Converters		A/D: BurrBrown D/A: BurrBrown	A/D: BurrBrown D/A: BurrBrown
Input sensitivity	High-Level	8-24 V/RMS	3-21 V/RMS
	Low-Level	1-8 V/RMS	1-5 V/RMS
	AUX	1-8 V/RMS	6.5 V/RMS
Output Voltage		6.5 V/RMS	6.5 V/RMS
Dimensions Width		8.66 inch	7.12 inch
Dimensions Depth		5.9 inch	4.88 inch
Dimensions Height		1.73 inch	1.61 inch

Accessories

DRC1

Digital Remote Controller with OLED Display

With the DRC1 remote controller it is possible to regulate the overall volume and the subwoofer level on the DSP device. In addition, the input signal, the channel pair for the subwoofer level and the stored DSP preset can be selected. It is also possible to mute the entire sound system by briefly pressing the rotary knob. Thanks to the OLED display, the DRC1 is easy to operate and only needs to be connected to the amplifier or processor with the included 5 meter connection cable. Compatible with all MUSWAY DSP products.



BTS

USB Bluetooth® Dongle for Audio Streaming

The BTS dongle offers an audio streaming function that allows you to wirelessly stream music from your mobile device to the DSP device. Compatible with all MUSWAY DSP products.



BTS-HD

USB Bluetooth® Dongle für HD Audio Streaming

The HD audio streaming function of the BTS-HD dongle enables wireless music transmission from the mobile device to the DSP in high-resolution brilliance. With an impressive 32-bit sampling depth and 96kHz sampling rate, the dongle with aptX™ HD codec even meets higher standards than conventional Hi-Res Audio CDs. In terms of dynamics, too, everything is perfect: while a CD with a dynamic range of 96 dB is already good, aptX-HD achieves a whopping 24 dB more. Compatible with all MUSWAY DSP products.



BTA2

USB Bluetooth® Dongle for Audio Streaming & App Control

In addition to the audio streaming function, the BTA2 dongle offers the option of configuring and controlling the DSP device via smartphone or tablet. The associated "MUSWAY Tunest" App can be downloaded free of charge from the App Store for iOS and from Google Play for Android. Compatible with the latest generation DSP products: M12, TUNE12, M6v3, D8v3, M4+v3 and DSP68



MB-DRC

Mounting bracket for Musway DRC1.

(DRC-1 not included) Mounts your Musway DRC1 securely and firmly in the housing with a small magnet.

EIGHT 100

8-Channel Full Range Class D Amplifier



SIX 100

4-CH Class D Amplifier-800 Watts RMS



MX

CLASS D AMPLIFIERS



Every channel pair can be bridged.
Bridging amplifier channels to more than double the power.



EPS technology which prevent when connected an OEM factory radio that no functions are impaired or error messages are written into the vehicle memory.



4-fold laminated board effectively suppresses EMC interference due to the favorable topology

Pure amplification function allows you to fine tune the sound via DSP



Technical Specifications		EIGHT 100	SIX 100
Power Output (RMS) @13.8 VDC	@4 Ω	8 x 100w	6 x 110W
	@2 Ω	8 x 180w	6 x 180W
	Bridged @ 4 Ω	4 x 360w	3 x 360W
Filter	High-pass	50 - 5000 Hz (CH1/2 & CH5/6) 10 - 500 Hz (CH3/4 & CH7/8)	50 - 5000 Hz (CH1/2) 10 - 500 Hz (CH3/4 & CH5/6)
	Low-pass	50 - 5000 Hz (CH3/4 & CH7/8)	50 - 5000 Hz (CH3/4 & CH5/6)
	Bass Boost	0 - 12 dB	0 - 12 dB
Damping factor 1kHz @ 4Ω		> 150	>150
S/N Ratio A weighted @1W		107 dB	>107dB
THD 1kHz @ 4Ω		< 0.02 %	<0.02%
Dimensions Width		11.81 inch	11.81 inch
Dimensions Depth		1.77 inch	1.77 inch
Dimensions Height		5.91 inch	5.91 inch

FIVE 100+

New

5-Channel Full Range Class D Amplifier



FOUR 100

4-CH Class D Amplifier-800 Watts RMS



MX

CLASS D AMPLIFIERS



Every channel pair can be bridged.
Bridging amplifier channels to more than double the power.



EPS technology which prevent when connected an OEM factory radio that no functions are impaired or error messages are written into the vehicle memory.



4-fold laminated board effectively suppresses EMC interference due to the favorable topology

Pure amplification function allows you to fine tune the sound via DSP



Technical Specifications		FIVE 100+	FOUR 100
Power Output (RMS) @13.8 VDC	@4 Ω	(CH1 - CH4) 4 x 115W (CH5) 1 x 225W	4 x 120W
	@2 Ω	(CH1 - CH4) 4 x 200W (CH5) 1 x 400W	4 x 200W
	Bridged @ 4 Ω	(CH1 - CH4) 2 x 400W (CH5) 1 x 600W @ 1 Ohms	2 x 400W
Filter	High-pass	Channel 1/2 50 - 5000 Hz Channel 3/4 10 - 500 Hz	Channel 1/2 50 - 5000 Hz Channel 3/4 10 - 500 Hz
	Low-pass	Channel 3/4 50 - 5000 Hz	Channel 3/4 50 - 5000 Hz
	Bass Boost	0 - 18 dB (CH5)	0 - 12 dB @ 45 Hz
Subsonic Filter		10 - 40 Hz	NA
Damping factor 1kHz @ 4Ω		300	300
S/N Ratio A weighted @1W		> 107 dB	> 107 dB
THD 1kHz @ 4Ω		< 0.02%	< 0.02%
Dimensions Width		11.6 inch	8.66 inch
Dimensions Depth		1.7 inch	1.77 inch
Dimensions Height		5.9 inch	5.90 inch

TWO 100

2-CH Class D Amplifier 480 Watts RMS



P2

2-Channel Micro Full Range Class D Amplifier



MX

CLASS D AMPLIFIERS



Every channel pair can be bridged.
Bridging amplifier channels to more than double the power.



EPS technology which prevent when connected an OEM factory radio that no functions are impaired or error messages are written into the vehicle memory.



4-fold laminated board effectively suppresses EMC interference due to the favorable topology

Pure amplification function allows you to fine tune the sound via DSP



Technical Specifications		TWO 100	P2
Power Output (RMS) @13.8 VDC	@4 Ω	2 x 125w	2x70W
	@2 Ω	2 x 185w	2x105W
	Bridged @ 4 Ω	1 x 370w	1x210W
Filter	High-pass	50 - 250 Hz	NA
	Low-pass	50 - 250 Hz	NA
	Bass Boost	0 - 12 dB	NA
Damping factor 1kHz @ 4Ω		>250	-
S/N Ratio A weighted @1W		-	97 dB
THD 1kHz @ 4Ω		<0.012%	< 0.05 %
Dimensions Width		5.91 inch	4.84 inch
Dimensions Depth		1.77 inch	2.95 inch
Dimensions Height		3.94 inch	1.41 inch

ONE 2000



ONE 1000



ONE 600



MX

CLASS D AMPLIFIERS



Every channel pair can be bridged.
Bridging amplifier channels to more than double the power.



EPS technology which prevent when connected an OEM factory radio that no functions are impaired or error messages are written into the vehicle memory.



4-fold laminated board effectively suppresses EMC interference due to the favorable topology

Pure amplification function allows you to fine tune the sound via DSP



Technical Specifications		ONE2000	ONE1000	ONE600
Power Output (RMS) @13.8 VDC	@ 4Ω	1 x 850W	1x400W	1x250W
	@2 Ω	1x1400W	1x650W	1x400W
	@ 1Ω	1x1850W	1x1050W	1x650W
Filter	Subsonic	10-40 Hz	10-40 Hz	10-40 Hz
	Low-pass	40-150 Hz	40-150 Hz	40-150 Hz
	Bass-boost @ 45 Hz	0-18dB	0-18dB	0-18dB
Damping factor 1kHz @ 4Ω		>235	>320	>750
S/N Ratio A weighted @1W		104dB	105dB	91dB
THD 1kHz @ 4Ω		<0.05%	<0.05%	<0.05%
Frequency Range		6 Hz - 1250 Hz	6 Hz - 1250 Hz	6 Hz - 1250 Hz
Fuse Rating		150 A	80 A	60 A
Dimensions Width		12.59 inch	9.44 inch	7.87 inch
Dimensions Depth		6.30 inch	5.90 inch	5.90 inch
Dimensions Height		1.97 inch	1.77 inch	1.97 inch



MG 6.3A

3-WAY ACTIVE COMPONENT SYSTEM

Complete set with MG6.2W, MG3M, MG6.2T

MG 6.2A

2-WAY ACTIVE COMPONENT SYSTEM

Complete set with MG6.2W, MG6.2T

MG 6.2W

6.5" MIDBASS SPEAKERS

125 Watts/RMS, 250 Watts/MAX, 4Ω
Mounting Depth 2.6 inch, Mounting Hole 5.6 inch

MG 6.2T

1" SILK DOME NEODYMIUM TWEETERS

1" 25 Watts/RMS, 250 Watts/MAX, 4Ω
Mounting Depth 0.76 inch, Mounting Hole 1.7 inch

MG 3M

3" MID SPEAKERS

60 Watts/RMS, 120 Watts/MAX, 4Ω
Mounting Depth 1.5 inch, Mounting Hole 2.87 inch





MC 62

6.5" 2-WAY COAXIAL SPEAKERS

Power Rating RMS 100 Watts Power Rating max. 200 Watts Mounting Depth 2.36 inch Impedance 4 Ohms Frequency Range 65-20000 Hz Mounting Diameter 5.67 inch Woofer Polypropylene Cone Tweeter Silk Diaphragm Dome

MC 62.2C

6.5" MIDBASS SPEAKERS

Power Rating RMS 100 Watts Power Rating max. 200 Watts Impedance 4 Ohms Frequency Range 65-20000 Hz Voice coil 1 inch Polypropylene Cone Mounting Depth 2.36 inch Mounting Diameter 5.67 inch

1" TWEETERS

Power Rating RMS 100 Watts Power Rating max. 200 Watts Impedance 4 Ohms Frequency Range 1500-20000 Hz Silk Diaphragm Dome Mounting Depth 0.98 inch Mounting Diameter 01.81 inch



MC Series Speakers to Expand with New Models: Featuring 2.75", 411, 5.25" and 6 x 911 Speakers



CSB4.2C

4" 2-WAY COMPONENT SYSTEM

60 Watts/RMS, 120 Watts/MAX, 4 Ω
.39 Inch Midrange Speaker (Pair)
.98 Inch Titanium Tweeter (Pair)

CSB42X

4" 2-WAY COAXIAL SPEAKERS

60 Watts/RMS, 120 Watts/MAX, 4 Ω
.39 Inch Midrange Speaker
.78 Inch Titanium Tweeter

FITS E/F/G MODELS

except CSB42X and CSB4.2C at F15/F16, front doors.
Compatibility depending on model and features.



CSB8W

8" SUBWOOFER (PAIR)

180 Watts/RMS, 300 Watts/MAX, 2 Ω
2" Voice Coil





CSM206X

4" 2-Way Coaxial Speakers for Mercedes-Benz Vehicles
4" Woofer, Glass Fiber Conde
60 Watts RMS (120 Watts Peak Power Handling)
Frequency Range 75 - 22000 Hz
Impedance 4 Ohms
Dual Neodymium Magnet
.62 inch Silk Dome Neodymium Tweeters
Installation Depth 1.38 inch
Installation Diameter 3.86 inch
Plug+Play Connectors

CSM206C

4" 2-Way Component System for Mercedes-Benz Vehicles
60 Watts RMS (120 Watts Peak Power Handling)
Frequency Range 75 - 24000 Hz
Impedance 4 Ohms
Dual Neodymium Magnet
.98 inch Silk Dome Neodymium Tweeters
Installation Depth 1.26 inch
Installation Diameter 3.86 inch
Plug+Play Connectors
Compatibility: Mercedes-Benz Vehicles



CSM206W

8" 200W Max Power 2-Ohms Subwoofer for Mercedes-Benz Vehicles
8" Subwoofer
120 Watts RMS (200 Watts Peak Power Handling)
Frequency Range 30 - 300 Hz
Impedance 2 Ohms
Dual Neodymium Magnet
(1.41") Voice Coil
Carbon Sandwich Cone, Conex Spider
Plug+Play Connectors

ACTIVE Subwoofer



SWA7

ACTIVE UNDERSEAT-SUBWOOFER-SYSTEM WITH 17CM (6.5") SUBWOOFER

Integrated Class A/B amplifier
1 x 80 Watts RMS, 1 x 600 Watts
LP Crossover 50-150 Hz
Bass Boost 0-12dB @ 45 Hz
Subsonicfilter 20 Hz fixed
Phase Switch 0/180°, RCA Inputs
Auto Turn-On, High Level Inputs
Bass Remote Controller
Dimensions: 7.8 x 2.9 x 10.7 inch

MWS1022

10" FLAT DESIGN SUBWOOFER

300 Watts RMS, 600 Watts max.
Impedance 2 + 2 Ohms
50 mm (2") Voice Coil
Sturdy Steel Basket
1,27 kg (45 oz.) Magnet
Fs 32,6 Hz • Qts 0,75 • VAS 31,2 L
SPL 83 dB, Xmax +/- .6 inch
Installation Depth 3.4 inch
Installation Opening 9.1 inch



Musway MWS1022

Oberklasse 1,4

CAR, HiFi

Preis-Leistung sehr gut



Musway MWS822

Oberklasse 1,4

CAR, HiFi

Preis-Leistung sehr gut

MWS822

8" FLAT DESIGN SUBWOOFER

250 Watts RMS, 500 Watts max.
Impedance 2 + 2 Ohms
50 mm (2") Voice Coil
Sturdy Steel Basket
1,13 kg (40 oz.) Magnet
Fs 39,7 Hz • Qts 0,575 • VAS 10,9 L
SPL 83 dB, Xmax +/- .6 inch
Installation Depth 3.07 inch
Installation Opening 7.1 inch

MW622

6.5" 150W RMS Subwoofer Including Connection Cables

150 Watts RMS (300 Watts Peak Power Handling)
Impedance 2 + 2 Ohms
38 mm (1.5") Voice Coil
Sturdy Steel Basket
0.78 kg (25 oz.) Magnet
Fs 51,3 Hz • Qts 0,45 • VAS 8,2 L
SPL 85 dB
Xmax +/- .4 inch
Inkl. 2 x 1 Meter Connection Cables Ø 2,5 mm²
Installation Depth 3.3 inch
Installation Diameter 5.6 inch





MG12

12" 700W RMS Subwoofer with Protection Grille Included

■ Specifications

700 Watts RMS (1400 Watts Peak Power Handling)
Impedance 2 + 2 Ohms or 4 + 4 Ohms
3" Voice Coil
Sturdy Aluminum Cast Basket
2 x 1,7 kg (60 oz.) Magnet
Fs 30 Hz · Qts 0,4 · VAS 64 L
SPL 91 dB/2,38V/1m, Xmax +/- .86 inch
Pre-assembled Protection Grille
Installation Depth 7.1 inch
Installation Diameter 11.2 inch

MG10

10" 500W RMS Subwoofer with Protection Grille Included

■ Specifications

500 Watts RMS (1000 Watts Peak Power Handling)
Impedance 2 + 2 or 4 + 4 Ohms
62 mm (2.4") Voice Coil
Sturdy Aluminum Cast Basket
2 x 1,4 kg (50 oz.) Magnet
Fs 32 Hz · Qts 0,49 · VAS 31,5 L
SPL 88 dB/2,38V/1m · Xmax +/- .78 inch
Pre-assembled Protection Grille
Installation Depth 6.3 inch
Installation Diameter 9.4 inch



MG8

8" 300W RMS Subwoofer with Protection Grille Included

■ Specifications

300 Watts RMS (600 Watts Peak Power Handling)
Impedance 2 + 2 or 4 + 4 Ohms
50 mm (2") Voice Coil
Sturdy Aluminum Cast Basket
2 x 1,4 kg (50 oz.) Magnet
Fs 46 Hz · Qts 0,44 · VAS 9,5 L
SPL 88 dB/2,38V/1m · Xmax +/- .74 inch
Pre-assembled Protection Grille
Installation Depth 5.4 inch
Installation Diameter 7.2 inch





GLOBAL AUDIO
MARKETING



MUSWAY

MUSIC IS THE WAY



26820 Hobie Cir. Suite A-1
Murrieta, CA 92562 USA



sales@globalaudiomarketing.com



+1 951-816-6307



www.muswayusa.com